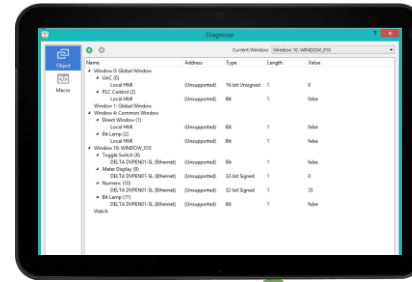


Diagnoser tool



How to view

Diagnoser tool In Weintek HMI



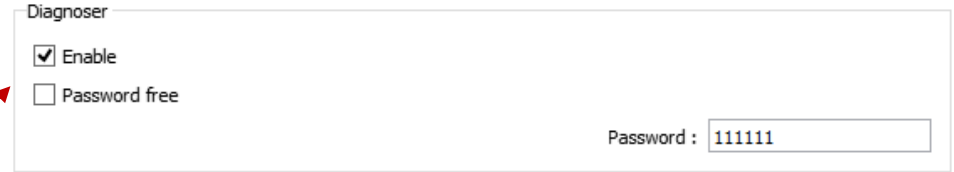
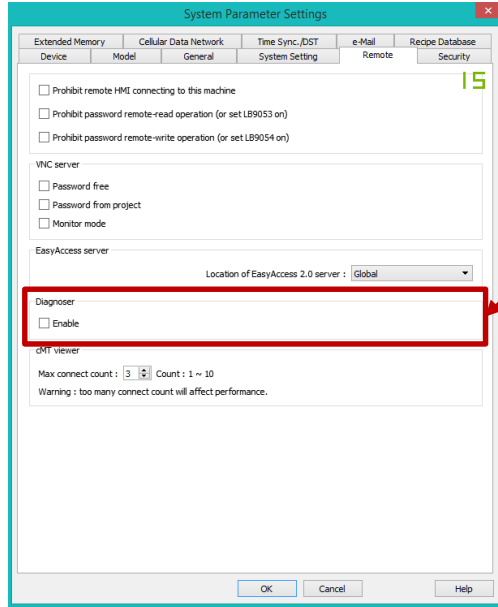
Diagnose your PLC



Step 1) Enable Diagnoser in HMI

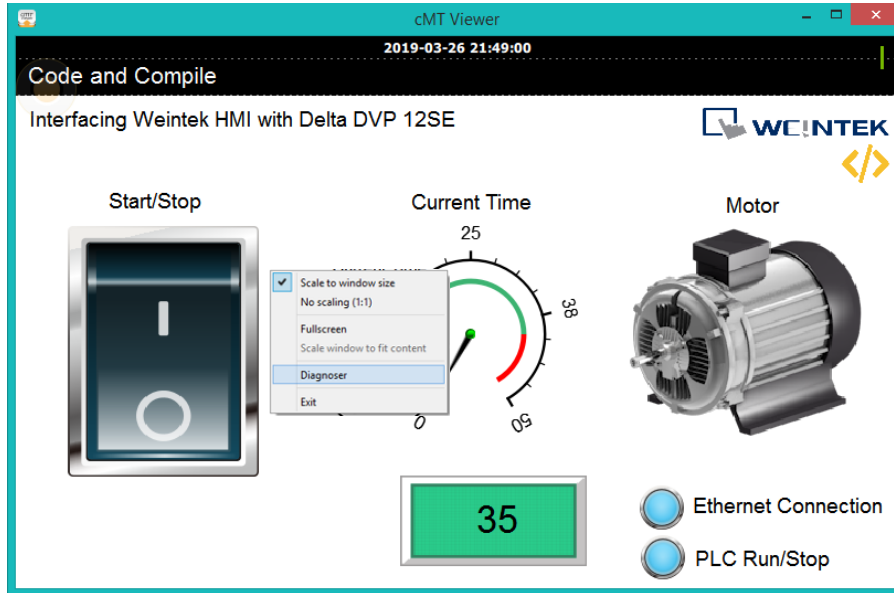
Goto Remote setting of your project on EasyBuilder Pro

Enable Diagnoser and download the project in your HMI

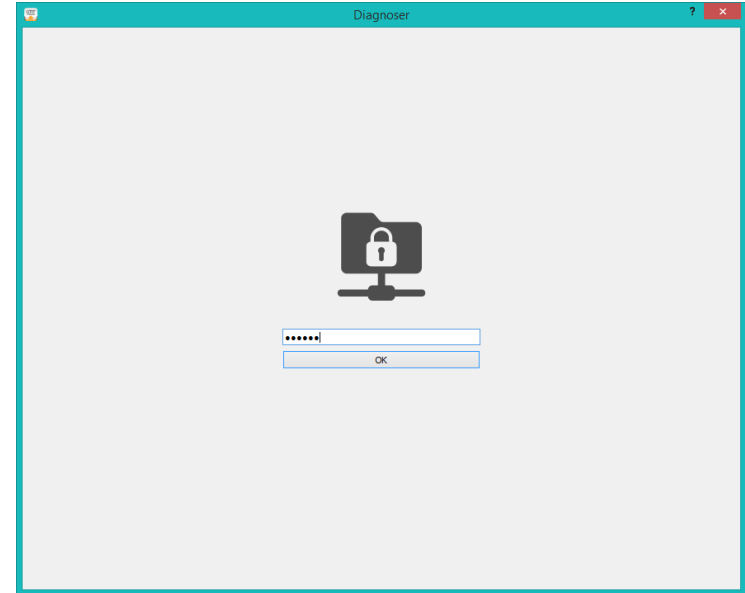


Step 2) Open cMT Viewer and select Diagnoser

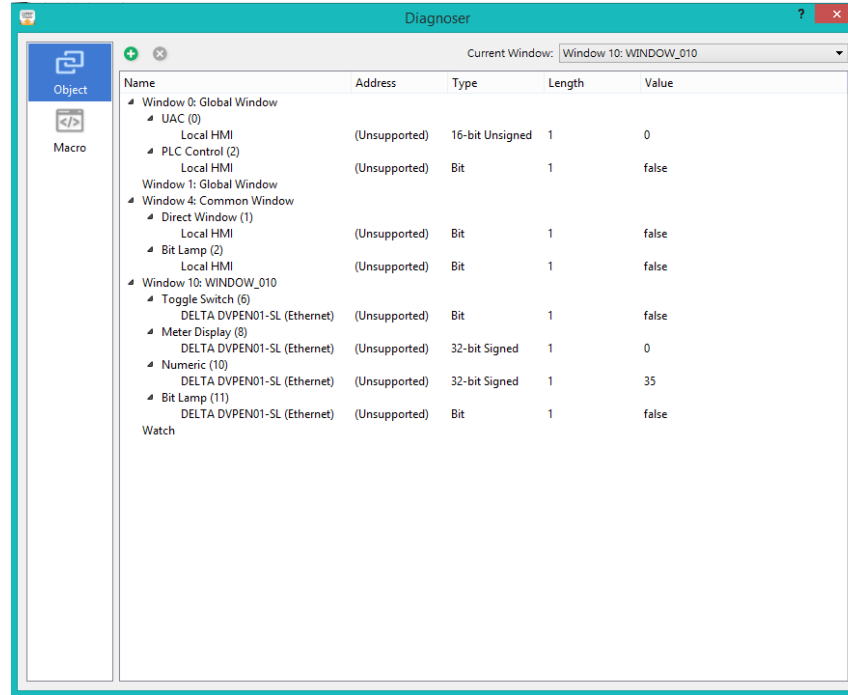
cMT Viewer



Diagnoser Window



Step 3) Evaluate your Diagnoser window



The screenshot shows the 'Diagnoser' application window. On the left, there is a sidebar with 'Object' and 'Macro' icons. The main area displays a tree view of objects under 'Current Window: WINDOW_10: WINDOW_010'. The tree view includes:

- Window 0: Global Window
 - UAC (0)
 - Local HMI (Unsupported)
 - PLC Control (2)
 - Local HMI (Unsupported)
- Window 1: Global Window
- Window 4: Common Window
 - Direct Window (1)
 - Local HMI (Unsupported)
 - Bit Lamp (2)
 - Local HMI (Unsupported)
- Window 10: WINDOW_010
 - Toggle Switch (6)
 - DELTA DVPEN01-SL (Ethernet) (Unsupported)
 - Meter Display (8)
 - DELTA DVPEN01-SL (Ethernet) (Unsupported)
 - Numeric (10)
 - DELTA DVPEN01-SL (Ethernet) (Unsupported)
 - Bit Lamp (11)
 - DELTA DVPEN01-SL (Ethernet) (Unsupported)
- Watch

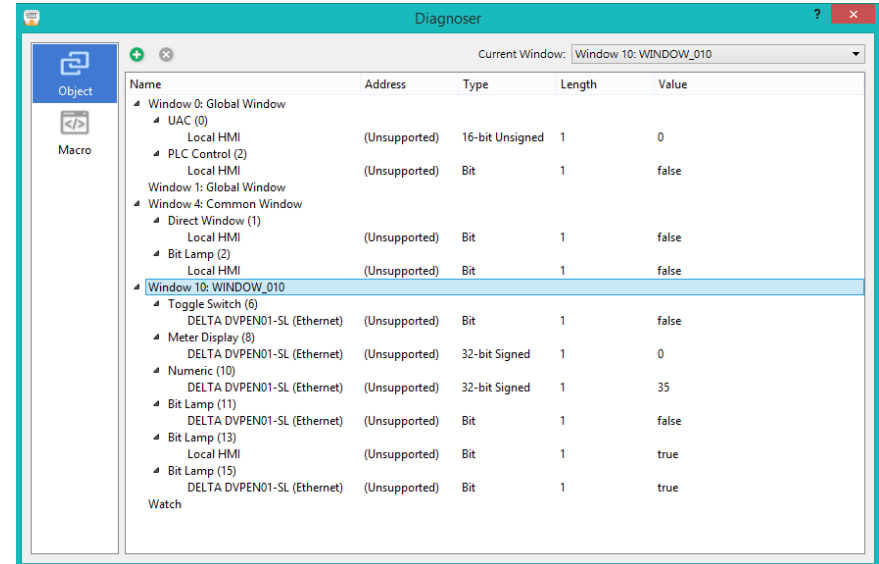
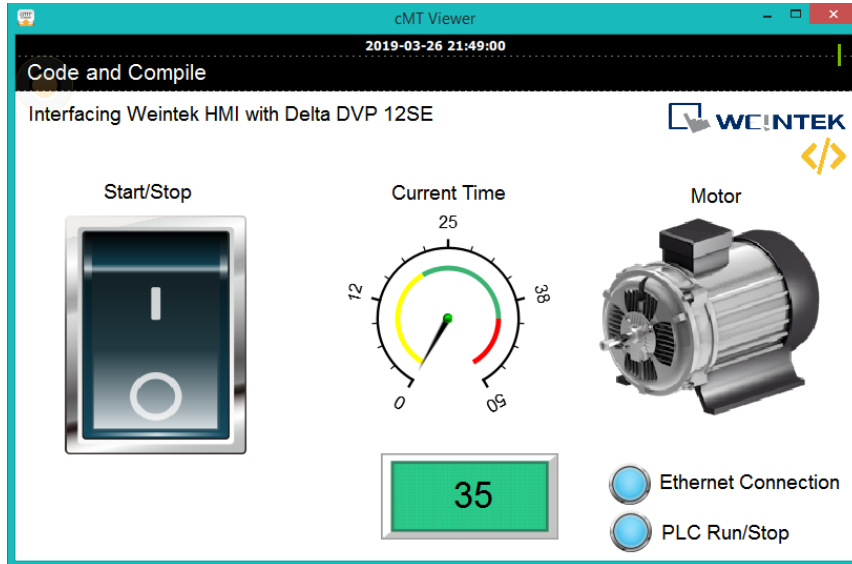
The table below shows the details for the objects in the tree view:

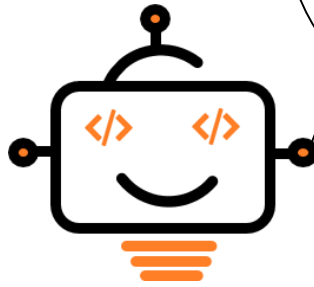
Name	Address	Type	Length	Value
Window 0: Global Window				
UAC (0)				
Local HMI	(Unsupported)	16-bit Unsigned	1	0
PLC Control (2)				
Local HMI	(Unsupported)	Bit	1	false
Window 1: Global Window				
Window 4: Common Window				
Direct Window (1)				
Local HMI	(Unsupported)	Bit	1	false
Bit Lamp (2)				
Local HMI	(Unsupported)	Bit	1	false
Window 10: WINDOW_010				
Toggle Switch (6)				
DELTA DVPEN01-SL (Ethernet)	(Unsupported)	Bit	1	false
Meter Display (8)				
DELTA DVPEN01-SL (Ethernet)	(Unsupported)	32-bit Signed	1	0
Numeric (10)				
DELTA DVPEN01-SL (Ethernet)	(Unsupported)	32-bit Signed	1	35
Bit Lamp (11)				
DELTA DVPEN01-SL (Ethernet)	(Unsupported)	Bit	1	false
Watch				

Step 4) Add PLC Status bits on your Screen

Ethernet Connection bit: Checks Ethernet Connection with PLC
PLC Run/Stop bit: Check PLC's processor status

Status check in Diagnoser Window





MANY MORE PRE-DEFINED
SYSTEM FUNCTIONS..
EXPLORE NOW!

To get more information visit

<https://www.weintek.com>

Link is also given in the video description



Weintek HMI
cMT3071