

How to interface Weintek cMT3071 with PLC DVP 12SE



Direct Address mapping

Things required

Hardware used:



Delta PLC
DVP 12SE

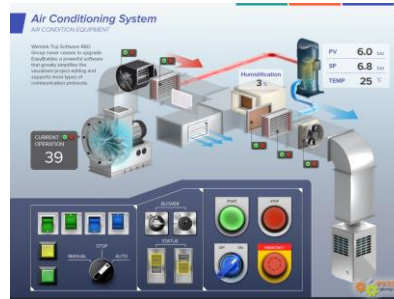


Weintek HMI
cMT3071

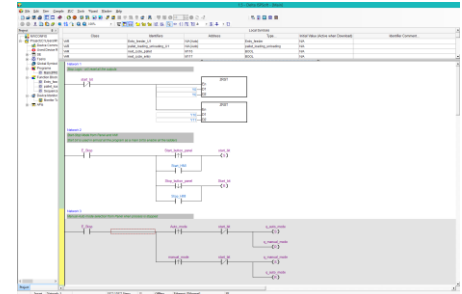


Ethernet cable

Software used:



EasyBuilder Pro
Free

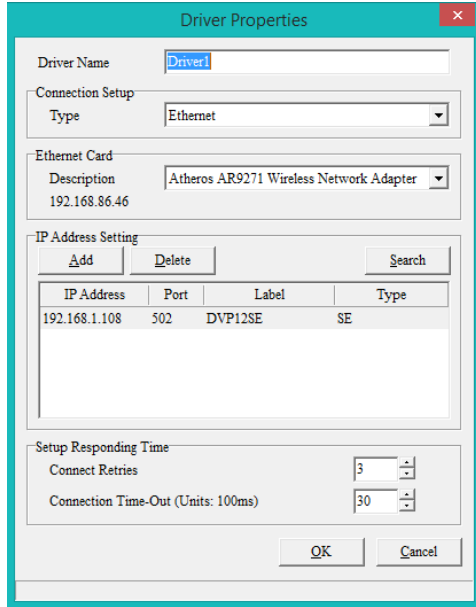


ISP Soft

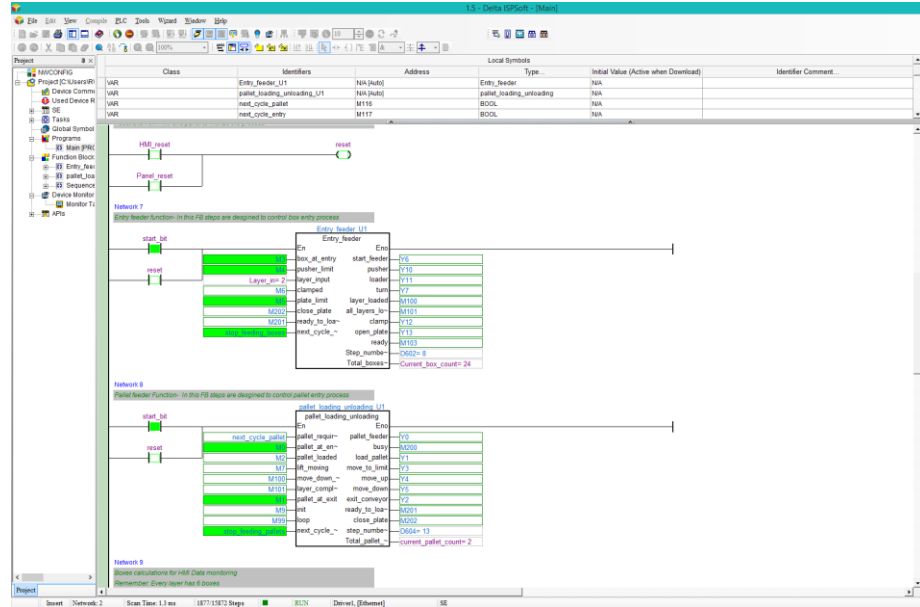
Step 1) Configure the PLC & write a program



Assign the IP Address and note it

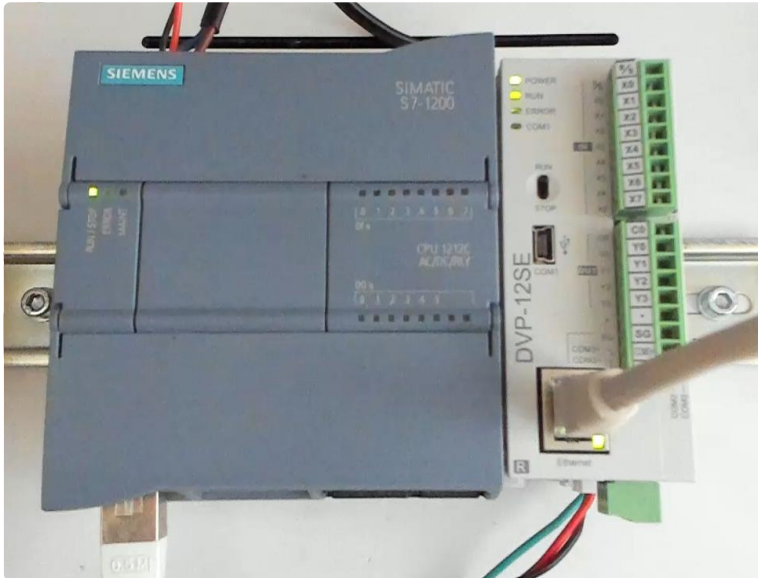


PLC Program in ISP Soft

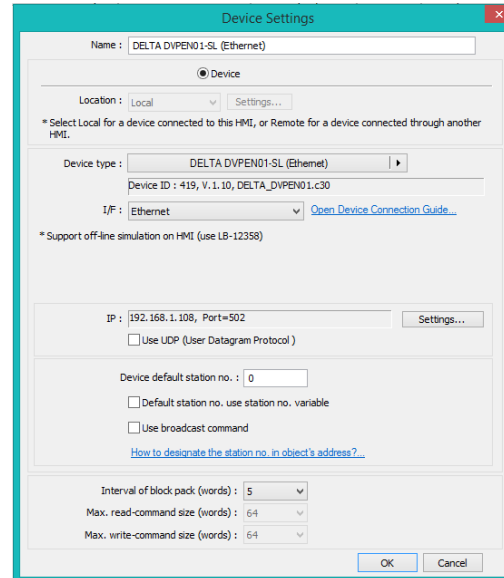


Step 2) Add device in EasyBuilder Pro

Make sure the device is connected via required communication cable



Select your controller in EasyBuilder Pro and enter IP address and port no.

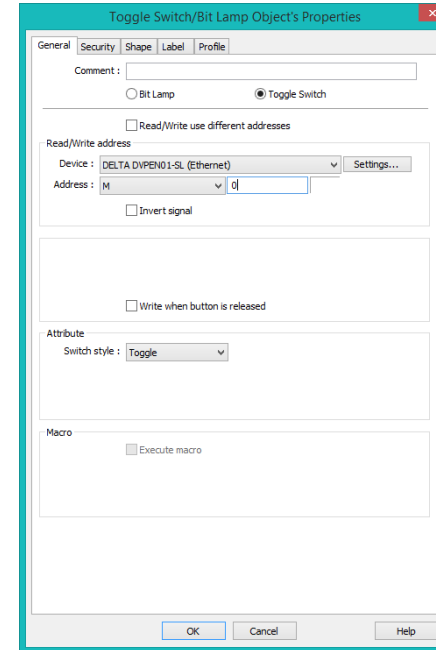
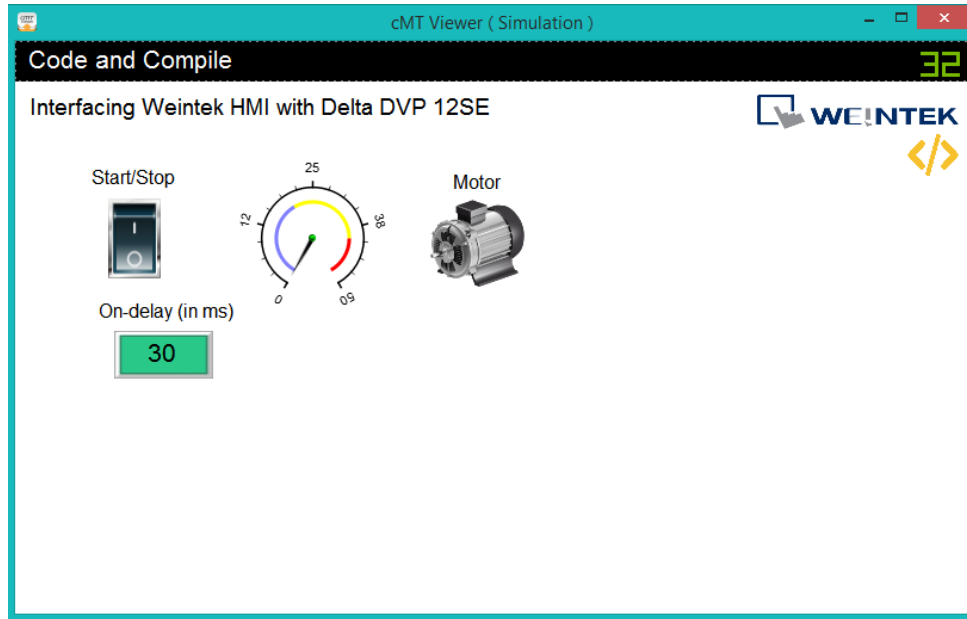


WEINTEK

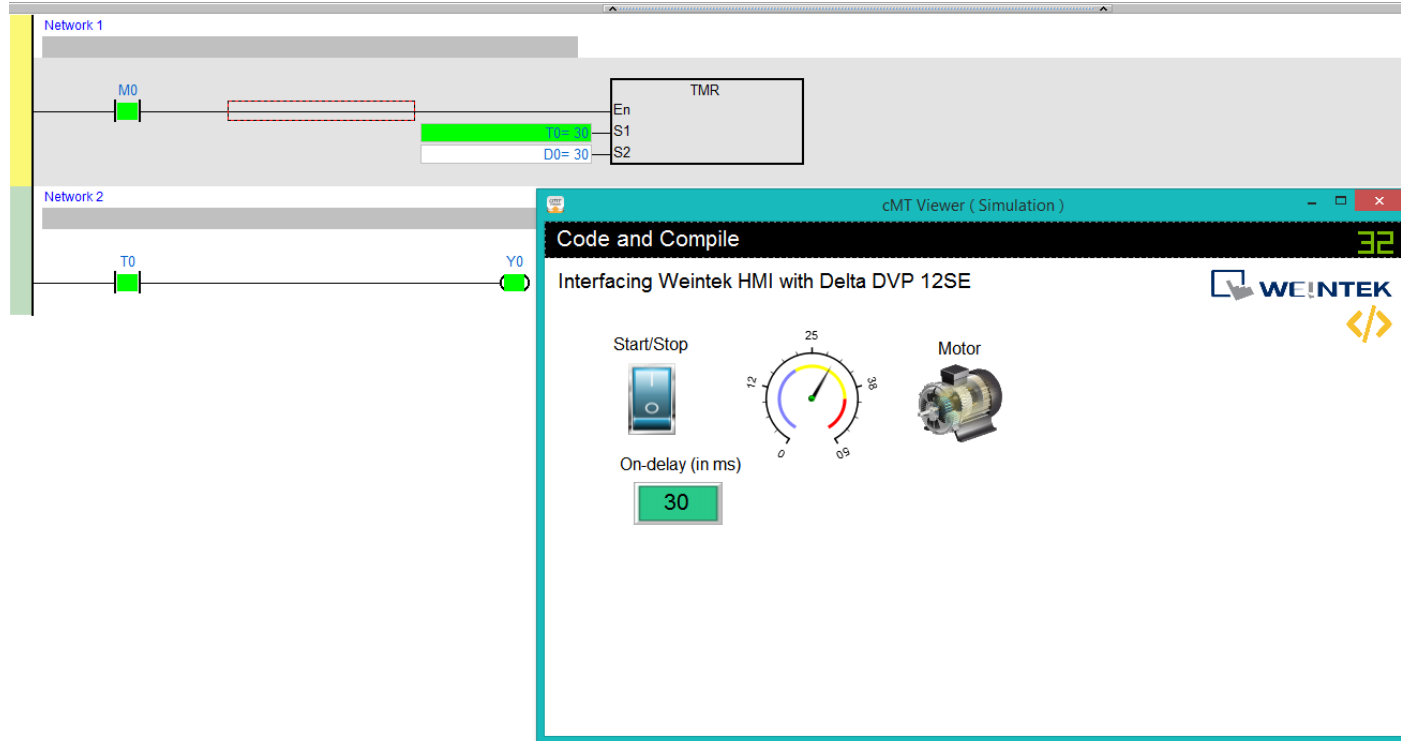
Step 5) Design screen and link tags

Design the screen in EasyBuilder Pro
as per your PLC logic requirement

Link the tags according to PLC Logic



Step 6) Download the screen and run!



The image displays a simulation environment with two ladder logic networks and a simulation window.

Network 1: Shows a normally open contact labeled M0 connected to a coil. A red dashed box highlights a coil with a green bar above it labeled T0=30 and a white bar below it labeled D0=30. To the right is a TMR (Timer) block with inputs En, S1, and S2.

Network 2: Shows a normally open contact labeled T0 connected to a coil labeled Y0.

Simulation Window (cMT Viewer): The window title is "cMT Viewer (Simulation)". The main area displays the text "Code and Compile" and "Interfacing Weintek HMI with Delta DVP 12SE". It features a "Start/Stop" button, a speedometer with a needle pointing to approximately 12 (scale 0-25), a "Motor" icon, and an "On-delay (in ms)" input field containing the value "30". The Weintek logo and a code icon are also present in the window.

Example Palletizer Logic

Visualizing on Weintek HMI



cMT Viewer (Simulation)

Code </> Compile
LEARNING MADE EASY

Factory I/O Palletizer monitoring Dashboard

Mode of operation

Automatic Manual

Start Stop Reset

Enter number of layers required:

Choose number of l... [v]


How many pallets required?

0

Status **Stopped**

0% 0% 100%

Recipe Progress



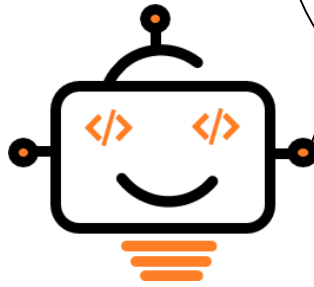
Data Monitoring

| | | | |
|-----------------------|---|-------------------------|---|
| Total boxes required: | 0 | Total pallets required: | 0 |
| Current boxes count: | 0 | Current pallet count: | 0 |
| Boxes left: | 0 | Pallets left: | 0 |

Steps Monitoring

Box loading steps
0 Ready

Pallet loading steps
0 Ready



WEINTEK HMI SUPPORTS
300+ PLC DRIVERS..
EXPLORE NOW!

To get more information visit

<https://www.weintek.com>

Link is also given in the video description



Weintek HMI
cMT3071