

How to interface

Weintek cMT-G01

IloT device with Delta PLC



In 3 easy steps

Things required

Hardware used:



Delta PLC
DVP 12SE

IP Address: 192.168.1.108



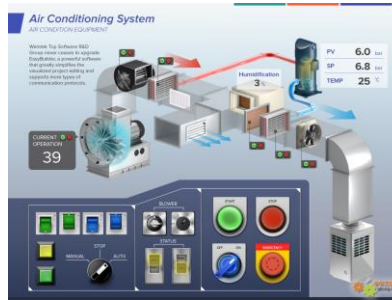
Weintek IloT
cMT-G01

IP Address: 192.168.1.104

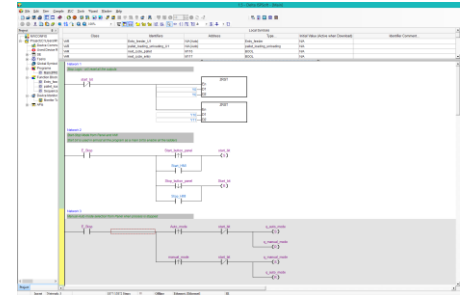


Ethernet cable

Software used:



EasyBuilder Pro
Free

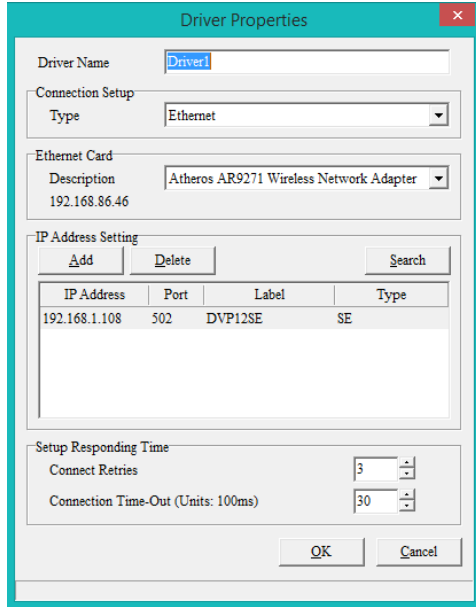


ISP Soft

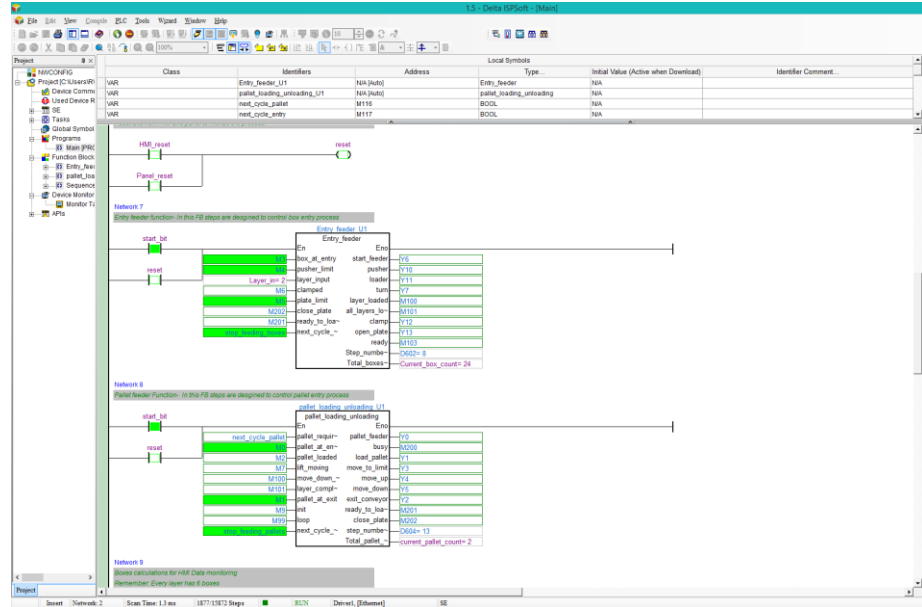
Requirement 1) Configure the PLC & write a program



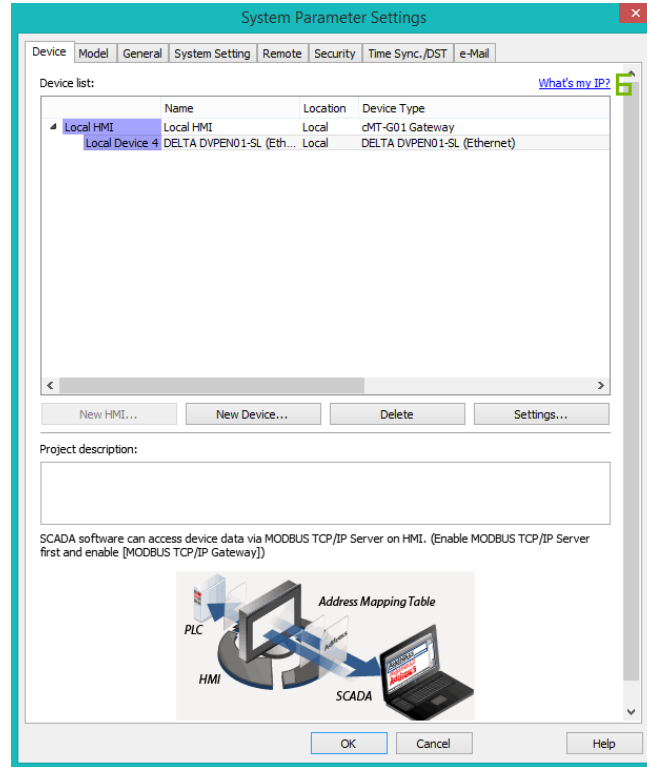
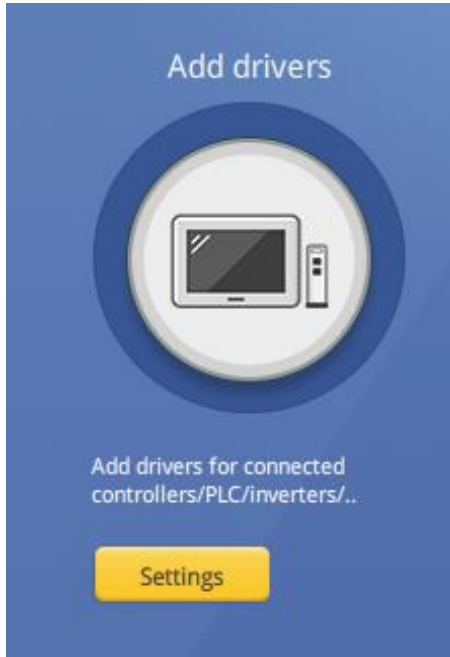
Assign the IP Address and note it



PLC Program in ISP Soft



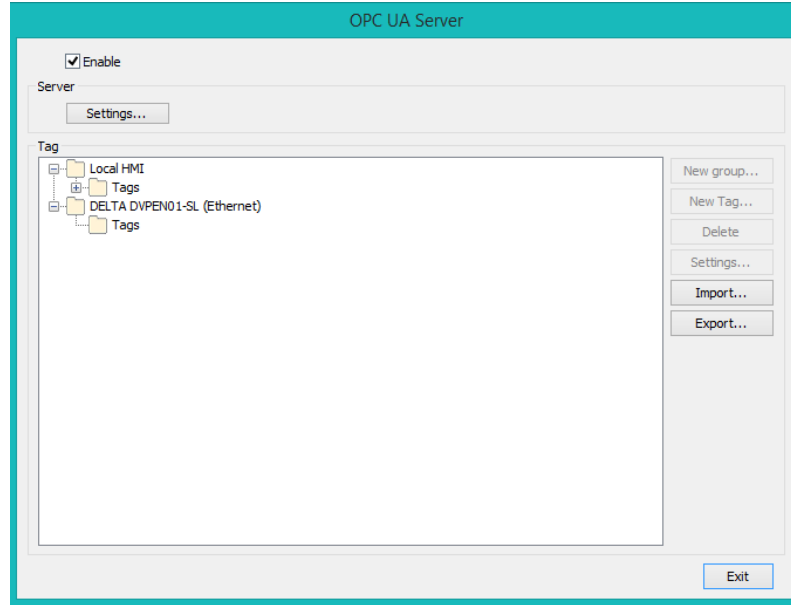
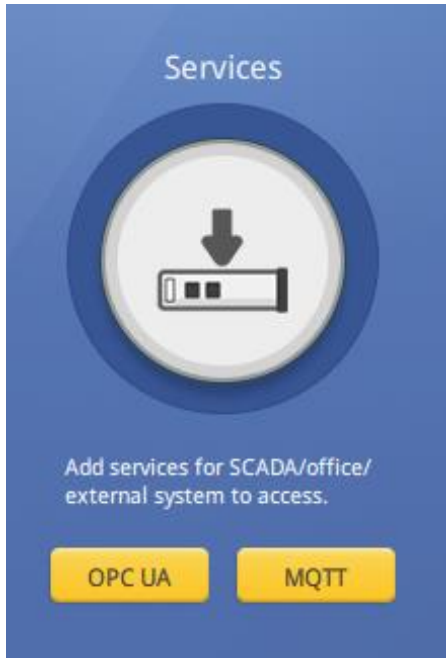
Step 1) Add drivers in EasyBuilder Pro



Add your controller from the list of available controllers and setup the tags.

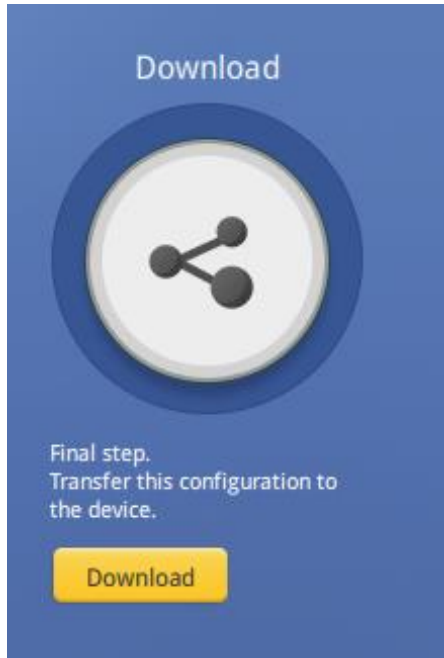
Here I added Delta PLC

Step 2) Setup OPC-UA in EasyBuilder Pro



Assign the OPC-UA tags from the tags imported in the library

Step 3) Download the project



That's it!
Download the project in IloT Device



Monitor Tag status via OPC-UA Client software

Add the OPC-UA Server in OPC-UA Client software (UaExpert) and read tag status

The screenshot displays the UaExpert interface with the following components:

- Project Tree:** Shows a project named 'UaServer@weintekoT' under the 'Servers' folder.
- Address Space:** A tree view showing the hierarchy of the OPC-UA server, including 'Local HMI', 'Statistics', 'Tags', and 'Sys_Tags'. The 'Common Error Codes' folder is expanded, showing several error codes like 'LW-9400 Device1 error code'.
- Data Access View:** A table with columns: Server, NodeId, DisplayName, Value, Datatype, Source Time. It shows the selected tag's data.
- Attributes:** A detailed view of the selected tag's properties, including NamespaceIndex, IdentifierType, NodeClass, BrowseName, DisplayName, Description, and Value.
- References:** A section showing the relationship between the tag and its base data type.
- Log:** A message log at the bottom showing successful connection and browsing messages.



To get more information visit

<https://www.weintek.com>

Link is also given in the video description



Weintek IloT
cMT-G01